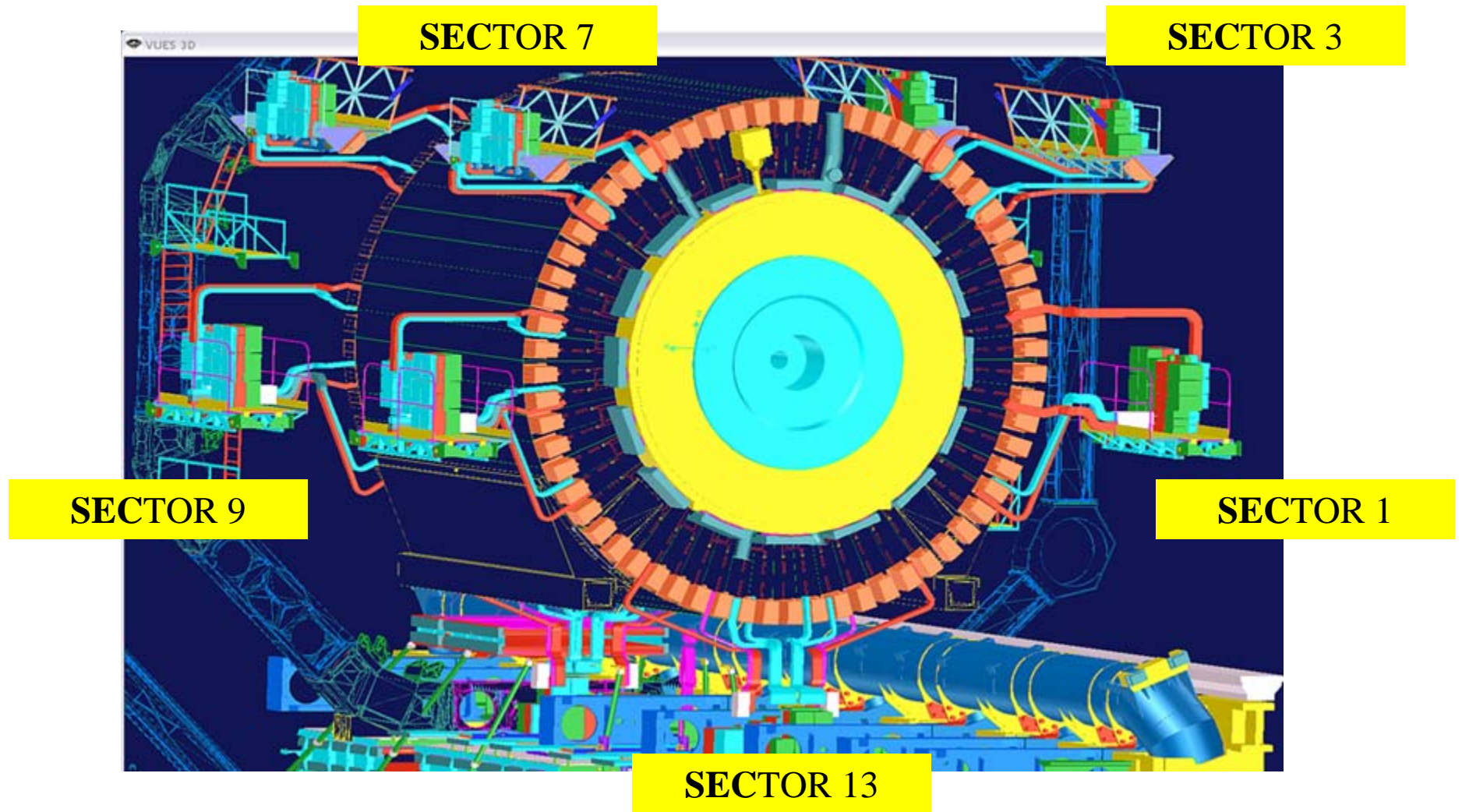


# PP2 Status TRT

Jack Fowler – 14 February 2006

# PP2 Positions Side A



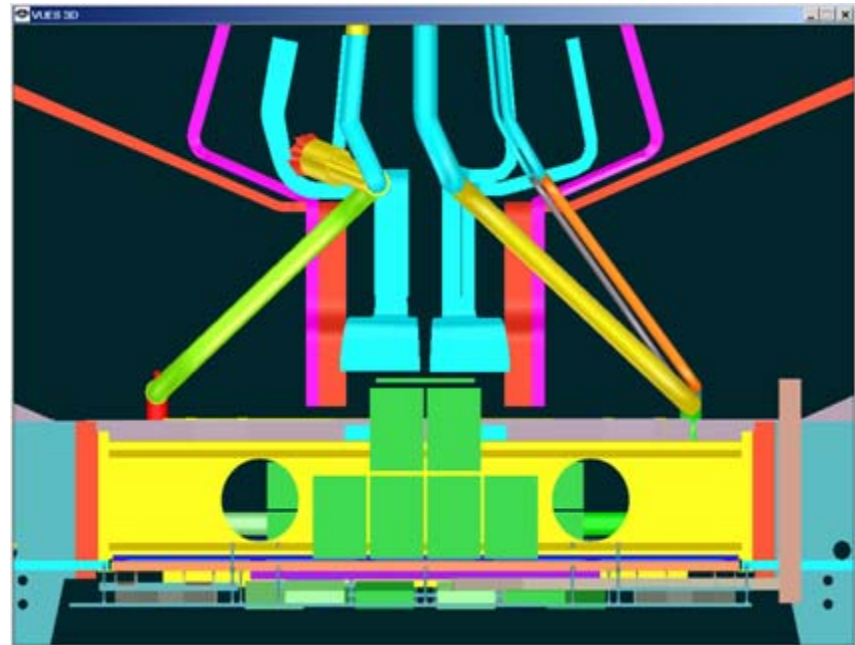
14 February 2006

Jack Fowler TRT

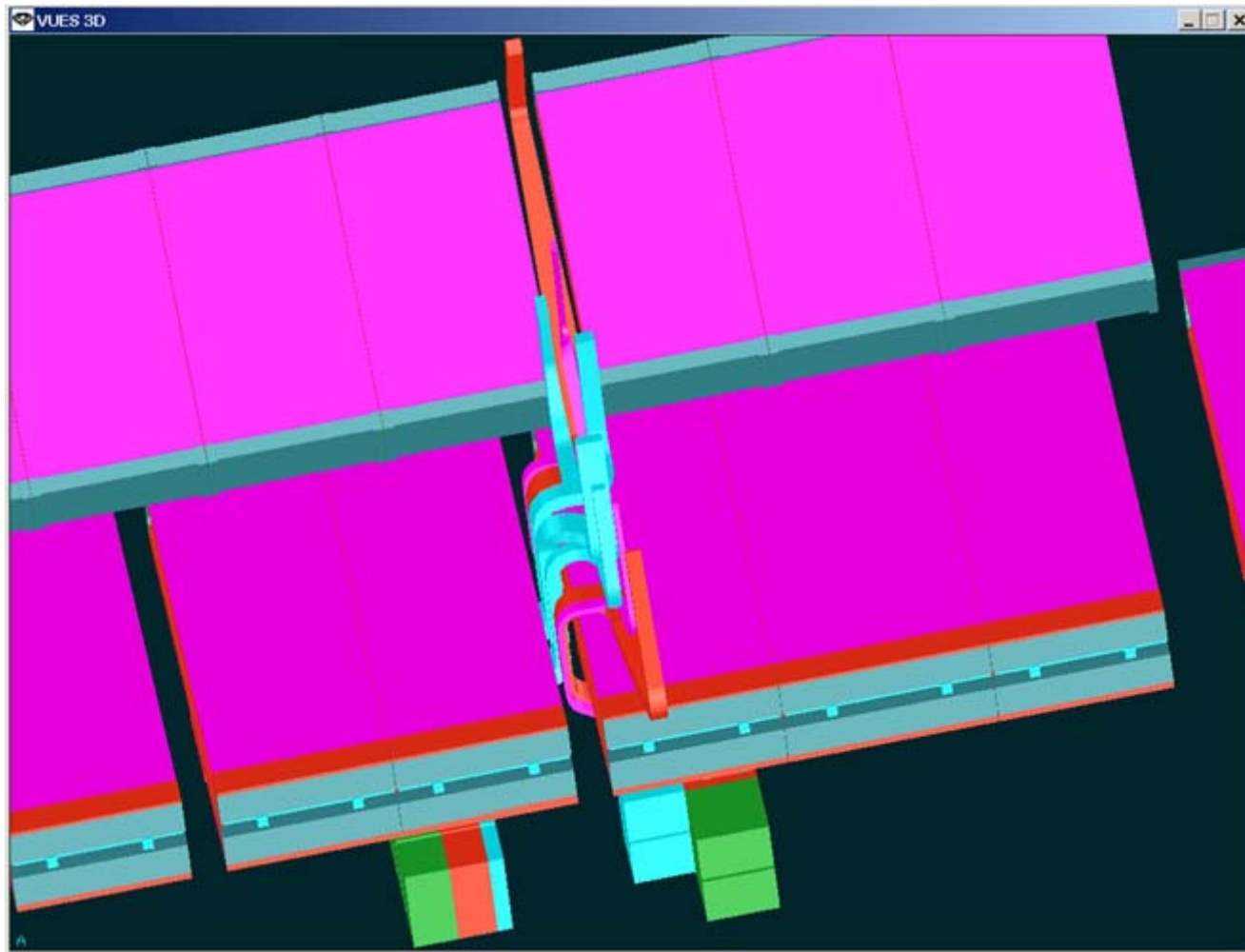
2

# Sector 13

- Design has been finalized
- No changes to TRT positions.
- Pixel power box has been rotated to improve access to type III cables.
- Final platform positions determined last week.
- Designing mounting plates for boxes on platform.
- Begin to fabricate and install.
- Need to finalize cooling circuit /connections and sniffer pipes



# View of Services going down through Muon Chambers



14 February 2006

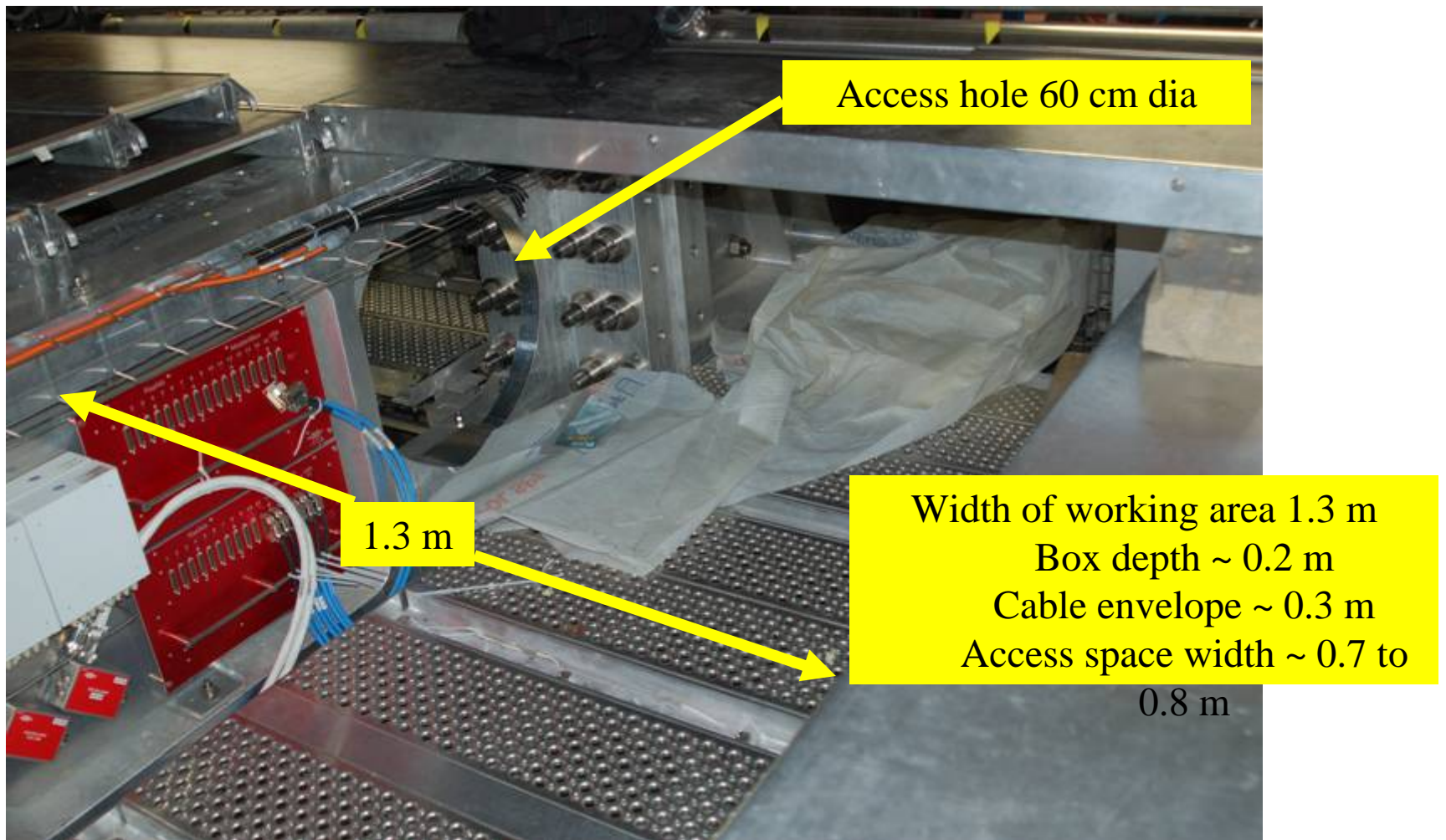
Jack Fowler TRT

4

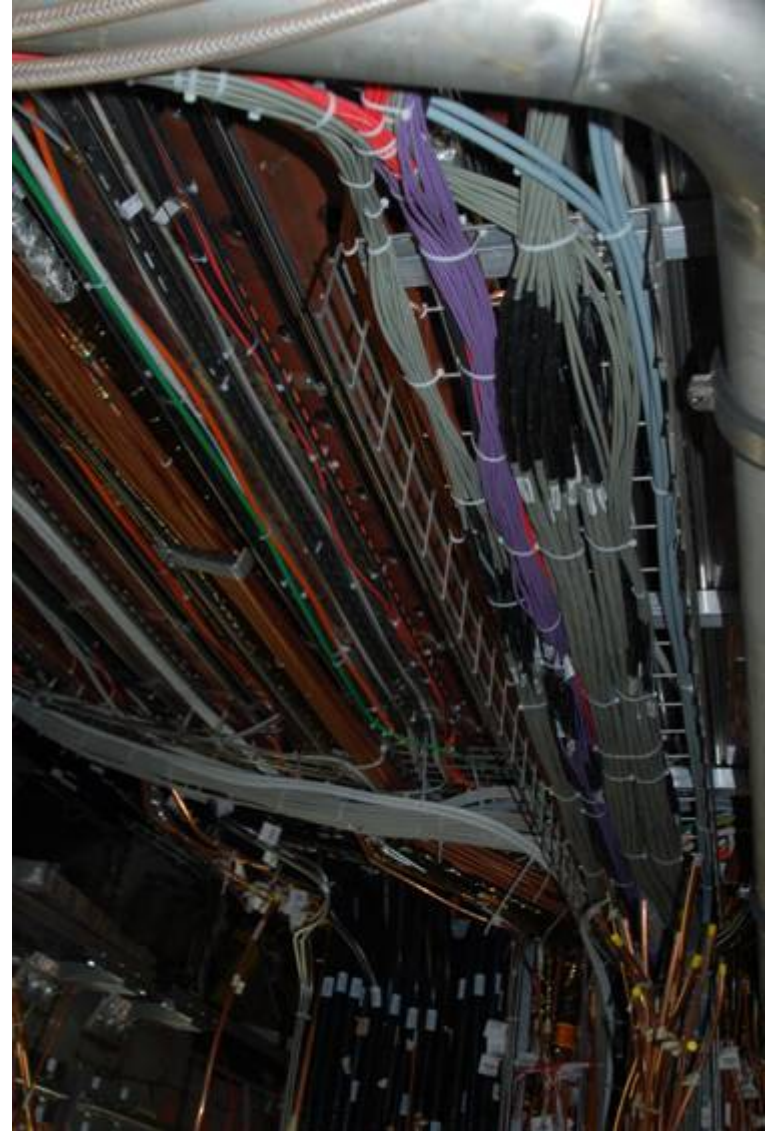
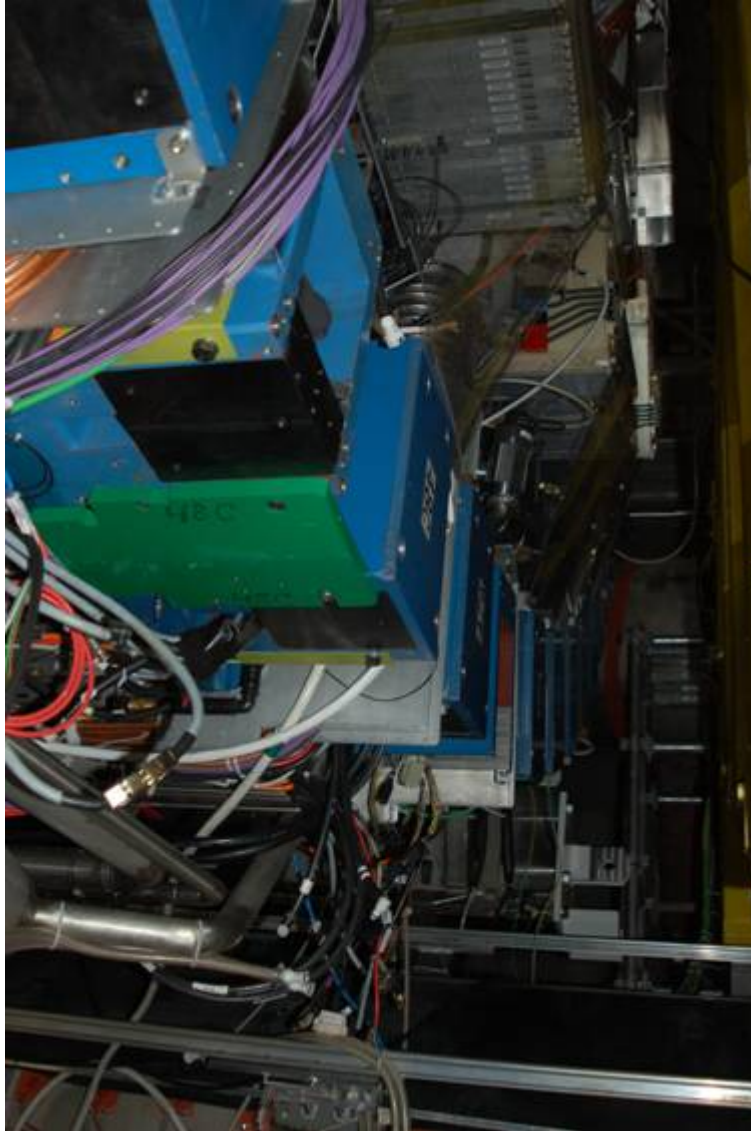
# View of Platform Showing Muon Chamber Above



# View of TRT Platform in Sector 13



# Services Routing

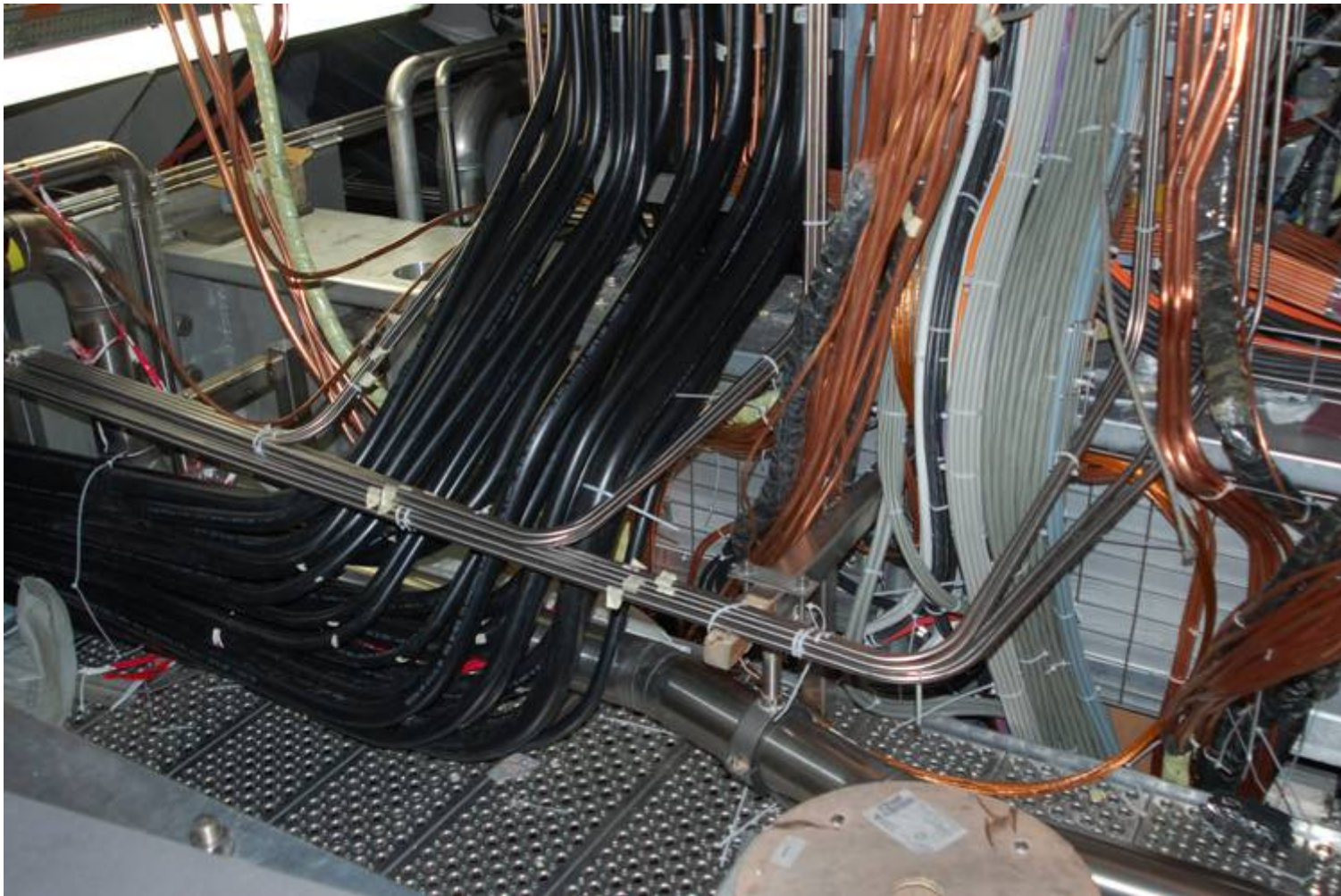


14 February 2006

Jack Fowler TRT

7

# Type III Cable Routing



14 February 2006

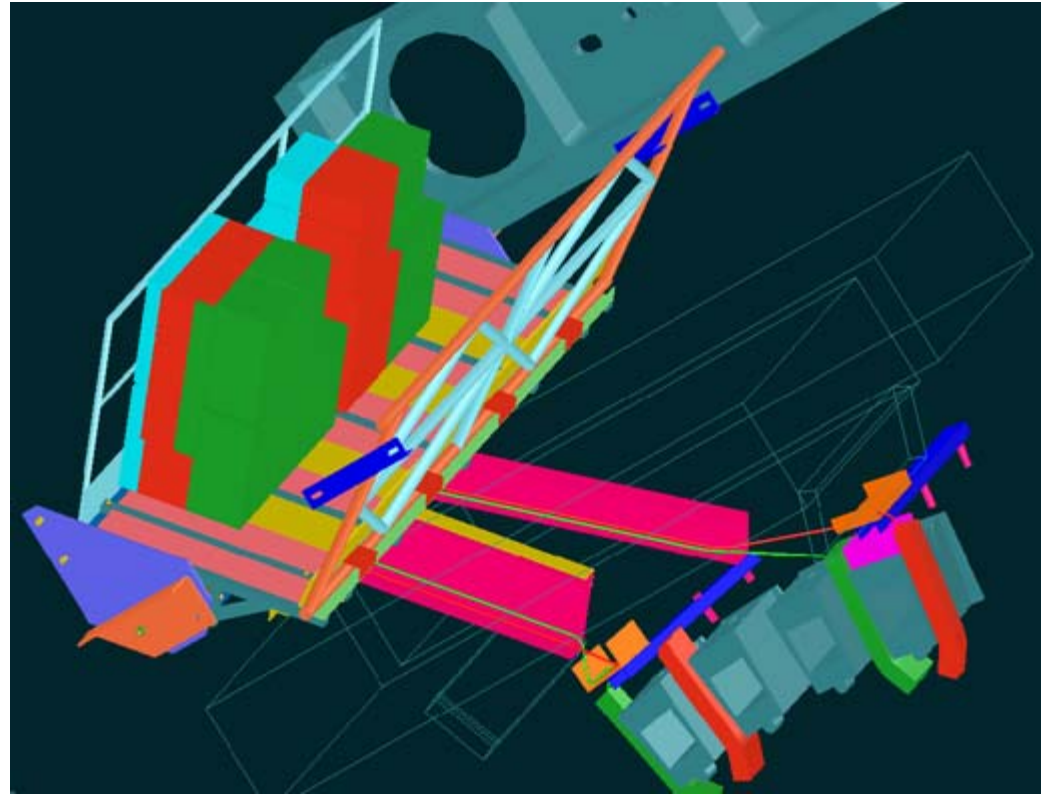
Jack Fowler TRT

8

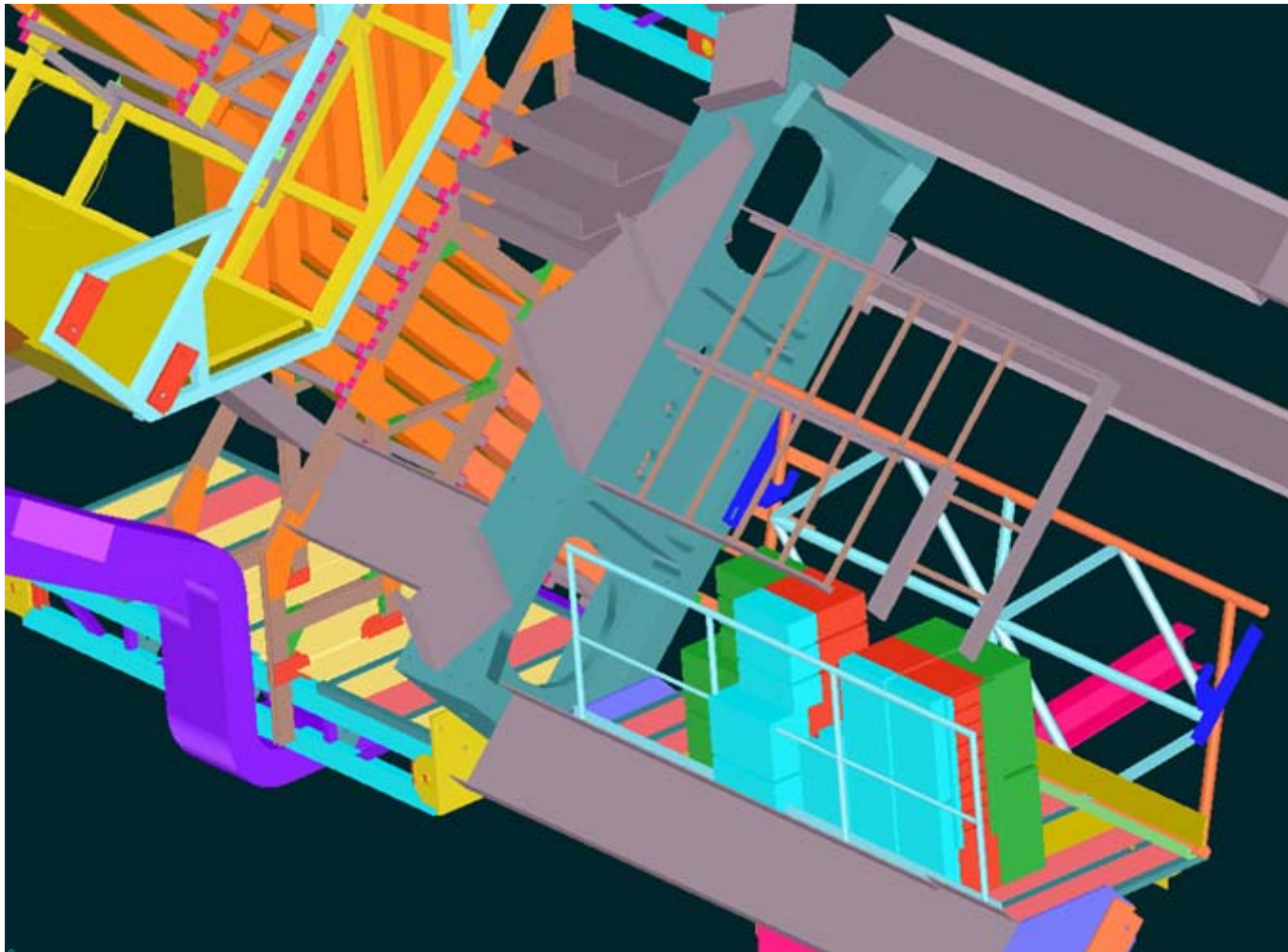


# Sectors 3 and 7

- Sectors 3 and 7 will be basically unchanged
- Moved small Pixel ENV box on top of TRT power
- Access to platform through 60 cm holes in voussoir
- Due to no direct access to rear of boxes, the lower level boxes will be installed, type II cables connected, then upper level boxes installed
- Limited working height ~ 1.4 m



# Type III Cable Trays and Cable Routing

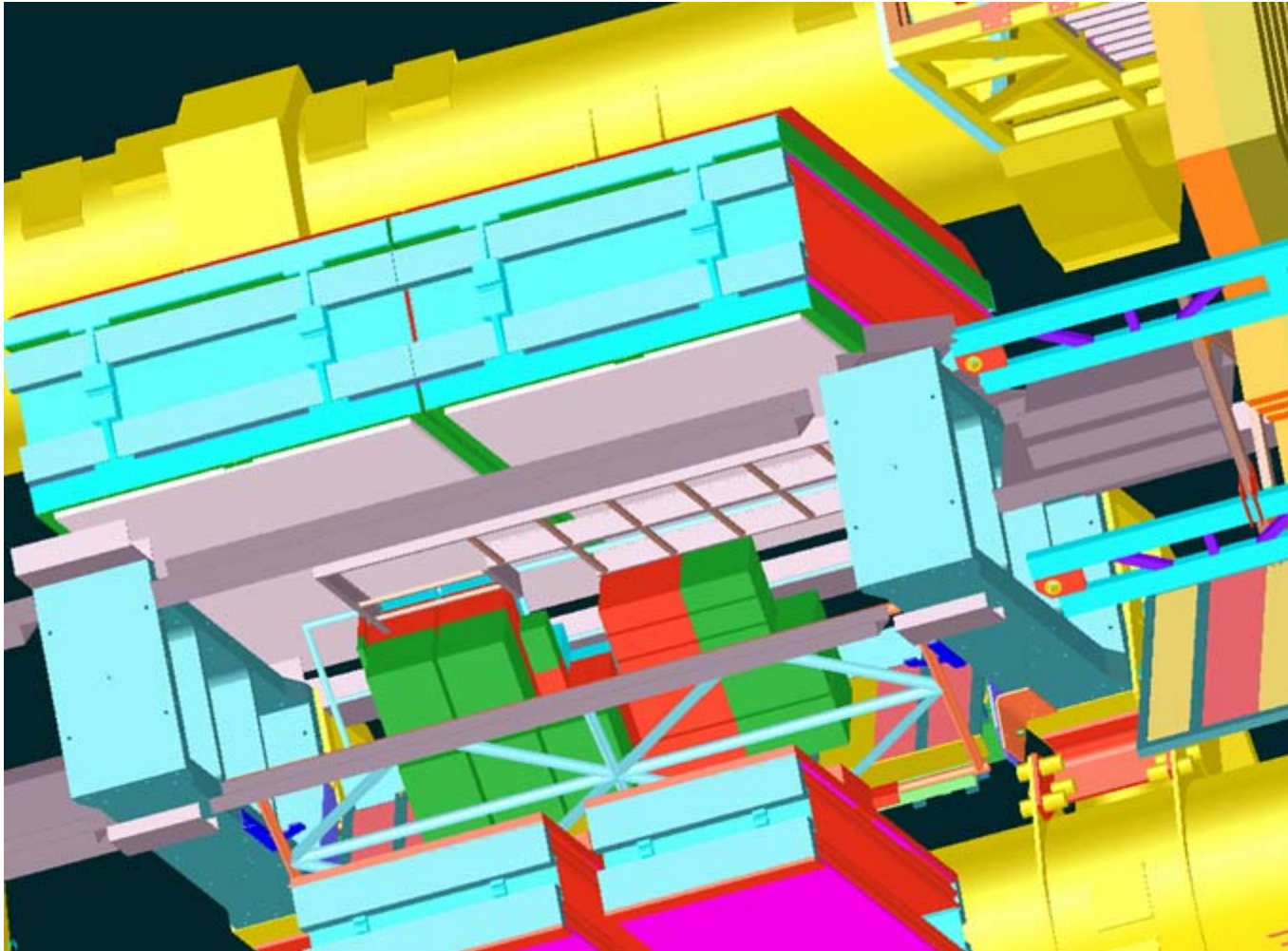


14 February 2006

Jack Fowler TRT

10

# Full View with Muon Chambers



14 February 2006

Jack Fowler TRT

11

# Other Issues

- Mechanical interconnections
  - Complete cooling tests and finalize connections between boxes
  - Leak test for cooling system
  - Sniffer tubing and connections
  - Fixation of HV connectors
- Cable strain relief – may be determined in situ
- Cable lengths needed – Type III?
- Cable connector protection during installation
- Type II DCS cable protection needs to be finalized and implemented
- Design for sectors 1 and 9???

# Schedule

- Sector 13 can begin in late Feb/March
- Drawings for phase II cabling in sector 13 (includes Type II TRT and Pixel cables to PP2) to be completed next week
- Platforms in sectors 3, 7, 1 and 9 are being installed now
- Current sequence of installation for PP2 boxes – 13, 9 and 3